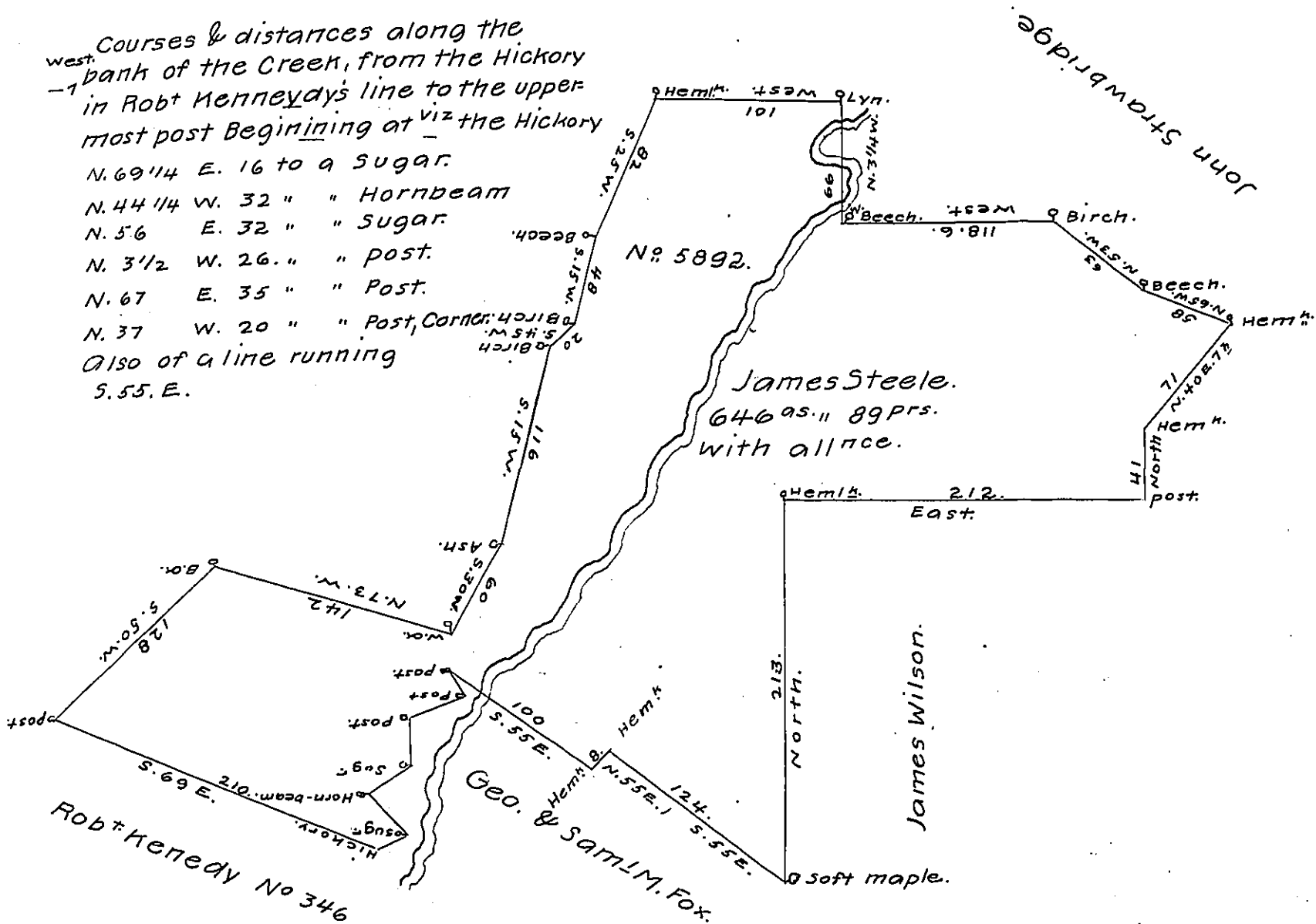


FORM NO. 1.

Courses & distances along the  
 west bank of the Creek, from the Hickory  
 -1 in Robt Kennedys line to the upper  
 most post Beginning at viz the Hickory  
 N. 69 1/4 E. 16 to a Sugar.  
 N. 44 1/4 W. 32 " " Hornbeam  
 N. 56 E. 32 " " Sugar  
 N. 3 1/2 W. 26. " " post.  
 N. 67 E. 35 " " Post.  
 N. 37 W. 20 " " Post, Corner.  
 Also of a line running  
 S. 55. E.



surveyed the above described tract of Land, partly in August  
 1808 and the remaining unfinished part in May 1809, in pursuance of  
 a warrant granted to James Steele, bearing date the 13<sup>th</sup> day of  
 December 1804 and numbered as in the attached plot of the Survey  
 5892. Situate adjoining Lands of Robert Kennedy on the South and  
 Lands of Geo. & Saml M. Fox on the south and East and James  
 Wilson & others on a water called the Third fork of Pine Creek or  
 Marsh Stream in Tioga County, Containing Six hundred and forty  
 six acres and eighty nine Perches and the usual allowance of Six  
 per cent for roads &c.

Wm. Wilson, D.S.

To Andrew Porter, Esquire,  
 Surveyor General.

John Norris, D.S.

IN TESTIMONY that the above is a copy of the original remaining on file in  
 the Department of Internal Affairs of Pennsylvania, made  
 conformably to an Act of Assembly approved the 16th day of  
 February 1833, I have hereunto set my hand and caused  
 the Seal of said Department to be affixed at Harrisburg,  
 this sixteenth day of May 1907.

*Henry Houder*  
 Secretary of Internal Affairs.